

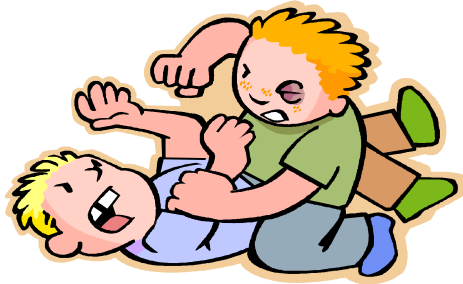
What is it?

A consistent, school-wide approach to empower our students with social and conflict resolution skills through teachable moments that occur throughout the school day.

Why create it?

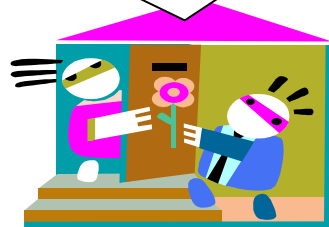
Staff members expressed the need/desire for a program such as this during grade-level, team, and whole-staff meetings. The need for an improvement in our students' ability to respectfully resolve conflicts on the playground has also been observed.

How will it work?

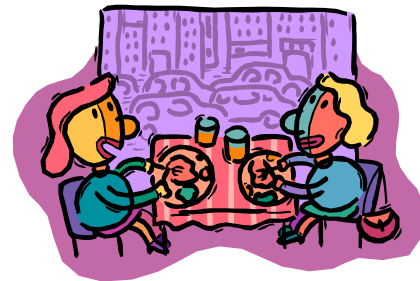


- Students whom are unable to respectfully resolve conflicts on the playground will be sent to the eagles' nest.
- This captures the teachable moment of a peer conflict while it is occurring
- Having to leave the playground is a natural consequence for not being able to function on it respectfully
- Empowers the playground supervisors with a way to handle peer conflicts

THE EAGLES' NEST



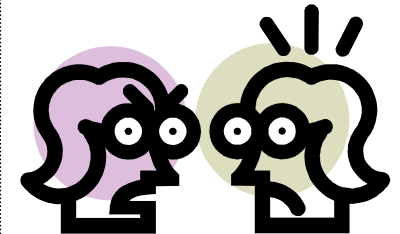
- Students peacefully resolve the conflict with the guidance of the nest supervisor (and peace patrol when available)



- Students then eat lunch together with the goal of getting to know each other and building some level of relationship that will hopefully reduce future conflicts



- Student fills out a flight plan during the first portion of lunch rec. A copy of the flight plan is kept on file, and, depending on the "offense," may be sent home to be signed and returned.



- Provides a consistent response when students choose not to treat teachers, peers, or the school with respect.