



# Pleasantdale

Middle School

Activities Handbook

2009 – 2010





**This Handbook provides a reference for all Co-curricular and interscholastic activities offered at Pleasantdale Middle School.**

**These programs provide opportunities for students to further develop their interests and talents. It is our intention that the contents of this handbook will assist you and your child in making decisions regarding their involvement in activities.**

***Participation in and/or attendance at activities are a privilege and not a right. It is the students' responsibility to maintain eligibility by meeting all academic and behavioral standards.***

# School Activities

## Activity

## General information

### 5<sup>th</sup> Grade Singers

Grade level

5

Length of activity:

Sept. - April

Meeting times:

7:30a.m. – 8:15a.m. Tuesdays and Thursdays

**Night performances involved**

### Band and Orchestra

Grade level:

5-6-7-8

Length of activity:

All Year

Meeting Times:

Concert Band

7:30a.m. – 8:15a.m. Tuesdays and Thursdays

Jazz Band

7:30a.m. – 8:15a.m. Fridays

Middle School Orchestra

7:30a.m. – 8:15a.m. Mondays and Wednesdays

Fifth Grade Band

3:30p.m. – 4:20p.m. Mondays and Thursdays

Fifth Grade Orchestra

3:30p.m. – 4:20p.m. Tuesdays

**Night and Saturday performances are involved**

### Concert Choir

Grade Level:

6-7-8

Length of activity:

Sept. - May

Meeting times:

7:30a.m.-8:15a.m. Wednesdays and Fridays

**Night and Saturday performances involved**

### Garden-Nature Club

Grade Level:

5-6-7-8

Length of activity:

Fall and Spring

Meeting times:

3:25p.m. – 4:30p.m. Dates to be announced.

## **Open Art**

Grade Level: 5-6-7-8  
Length of activity: All Year  
Meeting times: 3:25p.m.-4:30p.m. Check Intramural Schedule for days

## **Intramurals**

Grade Level: 5-6-7-8  
Length of activity: All Year  
Meeting times: 3:25p.m.-4:30p.m. Mondays, Tuesdays and Thursdays

## **Literacy Activities**

Grade Level: 5-6-7-8  
Length of activity: All Year  
Meeting times: 3:25p.m.-4:30p.m. one day per month

## **Math Enrichment**

Grade Level: 5-6-7-8  
Length of activity: All Year  
Meeting times: TBA

## **Morning Flag Corp**

Grade Level: 5-6-7-8  
Length of activity: All Year  
Meeting times: 8:00a.m. daily

## **Newspaper Club**

Grade Level: 5-6-7-8  
Length of activity: All Year  
Meeting times: 3:25p.m. – 4:30p.m. Tuesdays

### **Peer Leadership**

Grade Level: 6-7-8  
Length of activity: All Year  
Meeting times: TBA

### **Peer Mediators**

Grade Level: 6-7-8  
Length of activity: All Year  
Meeting times: As Needed

### **Pleasantdale Mascots**

Grade Level: 5-6-7-8  
Length of activity: Sept. — Jan.  
Meeting times: During home basketball games

### **Rainbows**

Grade Level: 5-6-7-8  
Length of activity: All Year  
Meeting times: TBA

### **Scholastic Bowl**

Grade Level: 6-7-8  
Length of activity: Dec. - April  
Meeting times: Times will vary (usually 2 days per week)

### **Spring Musical**

Grade Level: 6-7-8  
Length of activity: Late January — Late April  
Meeting times: 3:25p.m. — 5p.m. daily  
**Night performances involved**

## **Student Council**

Grade Level: **5-6-7-8**  
Length of activity: **All Year**  
Meeting times: **TBA**

## **Team Tigers**

Grade Level: **5-6**  
Length of activity: **All Year**  
Meeting times: **3:25p.m. – 4:30p.m. Mondays, Tuesdays, and Thursdays**

## **The Microscopers**

Grade Level: **5-6**  
Length of activity: **All Year**  
Meeting times: **3:25p.m. - 4:30p.m. Specific dates TBA**

## **The Uncoverables**

Grade Level: **7-8**  
Length of activity: **All Year**  
Meeting times: **3:25p.m. - 4:30p.m. Specific dates TBA**

## **Tiger Players**

Grade Level: **5-6-7-8**  
Length of activity: **Oct. – Feb.**  
Meeting times: **3:25p.m.-4:30p.m. - Weekly**

## **Yearbook**

Grade Level: **8**  
Length of activity: **All Year**  
Meeting times: **7:30a.m. Three days a week**

## **Activity**

## **General information**

### **5<sup>th</sup> Grade Singers**

**Grade level**

5

**Length of activity:**

Sept. - April

**Meeting times:**

7:30a.m. – 8:15a.m. Tuesdays and Thursdays

**Night performances involved**

### **Band and Orchestra**

**Grade level:**

5-6-7-8

**Length of activity:**

All Year

**Meeting Times:**

**Concert Band**

7:30a.m. – 8:15a.m. Tuesdays and Thursdays

**Jazz Band**

7:30a.m. – 8:15a.m. Fridays

**Middle School Orchestra**

7:30a.m. – 8:15a.m. Mondays and Wednesdays

**Fifth Grade Band**

3:30p.m. – 4:20p.m. Mondays and Wednesdays

**Fifth Grade Orchestra**

3:30p.m. – 4:20p.m. Tuesdays and Thursdays

**Night and Saturday performances are involved**

### **Concert Choir**

**Grade Level:**

6-7-8

**Length of activity:**

Sept. - May

**Meeting times:**

7:30a.m.-8:15a.m. Wednesdays and Fridays

**Night and Saturday performances involved**

### **Garden-Nature Club**

**Grade Level:**

5-6-7-8

**Length of activity:**

Fall and Spring

**Meeting times:**

3:25p.m. – 4:30p.m. Dates to be announced.

## **Open Art**

Grade Level: 5-6-7-8  
Length of activity: All Year  
Meeting times: 3:25p.m.-4:30p.m. Check Intramural Schedule for days

## **Intramurals**

Grade Level: 5-6-7-8  
Length of activity: All Year  
Meeting times: 3:25p.m.-4:30p.m. Mondays, Tuesdays and Thursdays

## **Literacy Activities**

Grade Level: 5-6-7-8  
Length of activity: All Year  
Meeting times: 3:25p.m.-4:30p.m. one day per month

## **Math Enrichment**

Grade Level: 5-6-7-8  
Length of activity: All Year  
Meeting times: TBA

## **Morning Flag Corp**

Grade Level: 5-6-7-8  
Length of activity: All Year  
Meeting times: 8:00a.m. daily

## **Newspaper Club**

Grade Level: 5-6-7-8  
Length of activity: All Year  
Meeting times: 3:25p.m. – 4:30p.m. Tuesdays

### **Peer Leadership**

Grade Level: 6-7-8  
Length of activity: All Year  
Meeting times: TBA

### **Peer Mediators**

Grade Level: 6-7-8  
Length of activity: All Year  
Meeting times: As Needed

### **Pleasantdale Mascots**

Grade Level: 5-6-7-8  
Length of activity: Sept. — Jan.  
Meeting times: During home basketball games

### **Rainbows**

Grade Level: 5-6-7-8  
Length of activity: All Year  
Meeting times: TBA

### **Scholastic Bowl**

Grade Level: 6-7-8  
Length of activity: Dec. - April  
Meeting times: Times will vary (usually 2 days per week)

### **Spring Musical**

Grade Level: 6-7-8  
Length of activity: Late January — Late April  
Meeting times: 3:25p.m. — 5p.m. daily  
**Night performances involved**

## **Student Council**

Grade Level: **5-6-7-8**  
Length of activity: **All Year**  
Meeting times: **TBA**

## **Team Tigers**

Grade Level: **5-6**  
Length of activity: **All Year**  
Meeting times: **3:25p.m. – 4:30p.m. Mondays, Tuesdays, and Thursdays**

## **The Microscopers**

Grade Level: **5-6**  
Length of activity: **All Year**  
Meeting times: **3:25p.m. - 4:30p.m. Specific dates TBA**

## **The Uncoverables**

Grade Level: **7-8**  
Length of activity: **All Year**  
Meeting times: **3:25p.m. - 4:30p.m. Specific dates TBA**

## **Tiger Players**

Grade Level: **5-6-7-8**  
Length of activity: **Oct. – Feb.**  
Meeting times: **3:25p.m.-4:30p.m. - Weekly**

## **Yearbook**

Grade Level: **8**  
Length of activity: **All Year**  
Meeting times: **7:30a.m. Three days a week**

# Activity Descriptions



**BAND and ORCHESTRA PROGRAM** offers students the opportunity to further their instrumental music skills in a performance-based arena. Pleasantdale has the following ensembles for students to learn and further their passion.

**Middle School Concert Band** is open to students in grades 6, 7 and 8 who play a band instrument.. Activities include two concerts per year, workshops at LTHS, Solo & Ensemble Festival, and Great America Music Festival.

**Fifth Grade Band** is open to all students in fifth grade who play a band instrument. Activities include two concerts per year, Solo & Ensemble Festival, and an ice cream social with the 4<sup>th</sup> grade band.

**Jazz Band** is open to all current Concert Band members in grades 6, 7 and 8 who play the following instruments: Saxophone, Trumpet, Trombone, Piano, Bass, Drums and Guitar. Auditions may be necessary. Other instruments may be included in Jazz Band at the discretion of the director. Activities include two concerts per year and a workshop at LTHS.

**Middle School Orchestra** is open to students in grades 6, 7 and 8 who play a string instrument. Activities include two concerts, Great America Music Festival, Solo & Ensemble Festival, and workshops at LTHS.

**Fifth Grade Orchestra** is open to any fifth grader who plays a string instrument. Activities include two concerts per year, Solo & Ensemble Festival, and an ice cream social with the 4<sup>th</sup> grade orchestra.



***CHORUS encourages students to develop their musical interests and skills through performance activities. There are no auditions for the three distinct choral groups. We have the 5<sup>th</sup> grade singers, the concert choir and the tiger chorus. All choral groups have two concerts at the middle school, in addition the concert choir has a festival at LT and a competition.***



***GARDEN-NATURE CLUB will provide experiences to spark students' curiosity and provide fertile ground for thinking and acting like scientists. Students will watch seedlings unfurl, discover a butterfly's food preference and uncover the mysteries of decomposition. Participants will research which plants will grow best in our area and what conditions will help each grow. They will then plan, plant, and tend the garden they create based on their findings.***



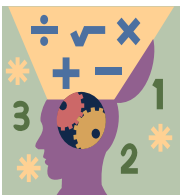
**HOMEWORK CLUB** *enables students to have a quiet environment for completion of classroom assignments.*



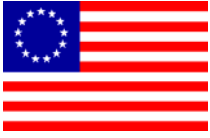
**INTRAMURALS** *offers a variety of activities centered on students' interests. These offerings are scheduled monthly and are posted on the district website. Students are encouraged to "drop-in" on any session.*  
*is a science club for 7<sup>th</sup> and 8<sup>th</sup> graders.*



**LITERACY ACTIVITIES** *will offer students an opportunity to experience adventure through the written word. Activities may include poetry slams and "open mic" performances.*



**MATH ENRICHMENT** *a coaching and competition program that builds math skills, promotes logical thinking and sharpens students' analytical abilities.*



**MORNING FLAG CORP** *meets daily to raise the flag and learn many historical facts.*



**NEWSPAPER CLUB** *—Students have the opportunity to write news stories, feature articles, poetry, and fiction as well as develop skills in lay out design and interviewing news sources. It is expected that students will attend each meeting and have "assignments" completed for deadlines.*



**OPEN ART** *welcomes students who enjoy this curriculum and want to do more. Projects are student initiated and may include seasonal crafts, drawings, paintings and sculptures. Open art is also a chance for those students needing more time on class projects.*



**PEER LEADERSHIP** *is a voluntary service organization where students make a yearlong commitment to helping others.*



**PEER MEDIATORS** *are a group of students trained in conflict resolution. These students work with the social worker and provide interventions in order to resolve student conflict in a positive manner.*



**PLEASANTDALE MASOTS** *provide lively entertainment while exhibiting their school spirit at all home basketball games.*



**RAINBOWS** - ensures *that grieving students have a supportive and nurturing environment. Students talk, share experiences and learn coping skills from one another when divorce or death touched their young lives.*



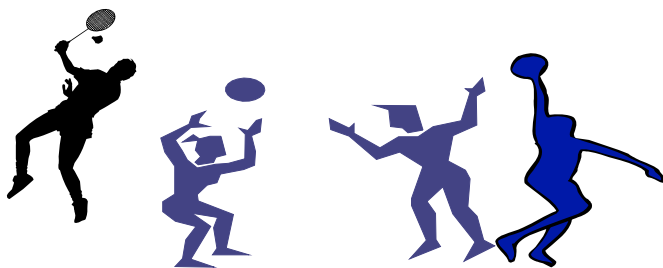
**SCHOLASTIC BOWL** is an academic extracurricular competition. . Students participate in study activities and simulating competition during practice sessions.



**SPRING MUSICAL** provides an outlet for students to showcase their thespian talents. Auditions are held in January. Cast members have three months to learn the script, songs, and choreography.



**STUDENT COUNCIL** is a student-focused organization that works to enhance the school and community. Leadership and citizenship are qualities that define the organization. The Student Council has four elected officers and a team of appointed advisory representatives.



**TEAM TIGERS** is a sports program for all 5th and 6th graders. The program provides exercise, recreation, skill development, game strategies, competition and fun to

***all participants in a relaxed yet structured environment. Basketball, dance, football, badminton and volleyball are among the sports to be offered.***



**THE MICROSCOPERS - *is a science club for 5<sup>th</sup> and 6<sup>th</sup> grade students.***



**THE UNCOVERABLES - *is a science club for 7<sup>th</sup> and 8<sup>th</sup> grade students.***



**TIGER PLAYERS (Drama Club) - *Participants will engage in activities that develop skills towards presenting one act plays.***



**TUTOR ROOM** – *enables students to have a quiet and supportive environment for completion of assignments and to have additional instruction in subject areas.*

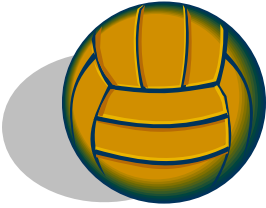


**YEARBOOK** *encourages students to become involved in all aspects of capturing the memories of the school year.*

# L.T.E.S.A.C. CONFERENCE SPORTS



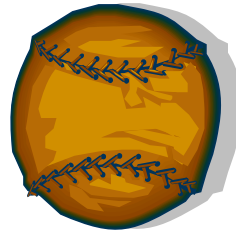
**BASKETBALL**



**VOLLEYBALL**



**CROSS COUNTRY**



**SOFTBALL**



**SOCCER**

## L.T.E.S.A.C. MEMBER SCHOOLS AND DRIVING DIRECTIONS

To **FOREST PARK** 925 Beloit Ave. Forest Park

Tel: 708-366-5703

1. Go north on Wolf Rd.
2. Turn right on Roosevelt Rd.
3. Turn left on DesPlaines Ave.
4. North to Harrison (stop light) turn right
5. East to Ferdinand and turn right
6. South on Ferdinand 1 ½ blocks
7. School is on the left. Entrance to gym is in the back of the school on Ferdinand. Park on the street

To **George Washington** 8101 Ogden Ave., Lyons

Tel: 708 -783-4200

1. Joliet Rd to East Ave
2. Turn left on East Ave
3. Turn right onto E. 55<sup>th</sup> St/w 55<sup>th</sup> st
4. This becomes Joliet rd
5. Turn Left onto Lawndale Ave.
6. Turn Right onto US 34

To **GURRIE** 1001 S. Spring, LaGrange

Tel: 708-482-2720

1. Brainard north to 53<sup>rd</sup>
2. Turn right on 53<sup>rd</sup> to Spring. School entrance is on Spring in middle of block

To **HIGHLANDS** 1850 Plainfield Rd.

Tel: 708-579-6890

1. Take Wolf Rd. to Plainfield
2. Turn right and go east about 1 ½ blocks
3. School is on the left. Turn left at the second driveway. Enter through doors at the west end of the building

To **MC CLURE** 4225 Wolf Rd., Western Springs

Tel: 708-246-7590

1. Take Wolf Rd. north
2. Go over Burlington tracks and continue for 1 block  
School is on the right
3. Turn right on 42<sup>nd</sup> St. and park behind the building  
1 block east of Wolf Rd. Entrance is in the back

To **PARK** 325 N. Park Rd., LaGrange

Tel: 708-482-2500

1. Take Wolf Rd. to Odgen Ave. turn right
2. East on Ogden to Brainard (stop light) turn left
4. School is on the corner of Ogden & Brainard. Parking lot and entrance are in the front

To **WESTCHESTER** 1620 Norfolk, Westchester

Tel: 708-450-2735

1. Take LaGrange Rd. north past Cermak (22<sup>nd</sup> St)
2. Continue on to the 2<sup>nd</sup> stop light which is Canterbury and turn right
3. East on Canterbury about 10 blocks to Norfolk (4 way stop) turn right
4. School is on the corner of Norfolk and Canterbury. Parking lot is next to building. Entrance in front

To **WILLOW SPRINGS** 8345 Archer, Willow Springs

Tel: 708-839-6828

1. Wolf Rd. south the German Church Rd. turn left
2. East on German Church to Willow Springs Rd. and turn right
3. Go south on Willow Springs to Archer (first light) turn left
4. Go east on Archer approximately 1 mile. School is on the right. Entrance and parking in front

7<sup>th</sup> Grade games start between 4:15 p.m. 8<sup>th</sup> Grade games start at 5:00 p.m. or immediately following 7<sup>th</sup> grade game. (unless otherwise noted)

Some conference tournaments will be held at Hodgkins Park District

# L.T.E.S.A.C. CONFERENCE TEAMS

Pleasantdale Middle School is a member of the Lyons Township Elementary School Athletic Conference. The following is a listing of the sports in which our Tigers compete and information regarding the time commitment involved for a participant of a conference sport. **All participants on a conference team must have a current physical on file in the nurse's office.**

## Boys' Softball

Teams:	7 <sup>th</sup> and 8 <sup>th</sup> grade
Season:	Start: Beginning of the school year End: Early October
Practices:	Daily
Games:	Begin at 4:00 p.m
Other:	Teams participate in an invitational tournament at the end of the regular season.

## Girls' Basketball

Teams:	7 <sup>th</sup> and 8 <sup>th</sup> grade
Season:	Start: Beginning of the school year End: Late October
Practices:	Daily
Games:	4:00 p.m. for 7 <sup>th</sup> grade team 5:00 p.m. for 8 <sup>th</sup> grade team
Other:	Teams participate in an invitational tournament at the end of the regular season.

## Cross Country

Teams:	5 <sup>th</sup> ,6 <sup>th</sup> ,7 <sup>th</sup> and 8 <sup>th</sup> grade
Season:	Start: Beginning of the school year End: Mid-October
Practices:	Daily
Meets:	Begin at 4:00 p.m.
Other:	Team participates in a conference tournament at the end of the regular season.
Note:	Cross Country is a “no-cut” sport.

## Boys' Basketball

Teams:	7 <sup>th</sup> and 8 <sup>th</sup> grade
Season:	Start: Late October End: Late January
Practices:	Daily
Games:	4:00 p.m. for 7 <sup>th</sup> grade team 5:00 p.m. for 8 <sup>th</sup> grade team
Other:	Teams participate in an invitational tournament at the end of the regular season.

## Girls' Volleyball

Teams:	7 <sup>th</sup> and 8 <sup>th</sup> grade
Season:	Start: Late January End: Late March
Practices:	Daily
Games:	4:00 p.m. for 7 <sup>th</sup> grade team 5:00 p.m. for 8 <sup>th</sup> grade team
Other:	Teams participate in an invitational tournament at the end of the regular season.

## Cheerleading

Teams:	7 <sup>th</sup> and 8 <sup>th</sup> grade
Season:	Start: Early November End: Late January
Practices:	Daily
Games:	4:00 p.m. for 7 <sup>th</sup> grade team 5:00 p.m. for 8 <sup>th</sup> grade team
Other:	Cheerleading is a “no-cut” sport.

## Girls' Softball

Teams:	7 <sup>th</sup> and 8 <sup>th</sup> grade
Season:	Start: Early April End: Mid-May
Practices:	Daily
Games:	Begin at 4:00 p.m.
Other:	

## Boys' Volleyball

Teams:	7 <sup>th</sup> and 8 <sup>th</sup> grade
Season:	Start: Early April End: Late May
Practices:	Daily
Games:	4:00 p.m. for 7 <sup>th</sup> grade team 5:00 p.m. for 8 <sup>th</sup> grade team
Other:	Teams participate in an invitational tournament at the end of the regular season.

## Co-ed Soccer

Teams:	7 <sup>th</sup> and 8 <sup>th</sup> grade
Season:	Start: Early April End: Mid-May
Practices:	Daily
Games:	Begin at 4:00 p.m.
Other:	Teams participate in a conference tournament at the end of the regular season.

# Responsibilities and Communications

## WHAT TO EXPECT FROM YOUR CHILD'S COACH/SUPERVISOR

- Thorough knowledge of the activity to adequately prepare members for their competitions or performances
- Written information regarding team/activity rules and consequences
- Written practice and game/performance information
- Adherence to established practice and game/performance schedules
- Supervision of participants at all times
- Respect for the integrity and judgment of game officials
- Respect for the integrity and personality of the individual participants

## PARTICIPANT RESPONSIBILITIES

- Adhere to school rules at all times
- Care and return of all uniforms and equipment
- Accept and understand the seriousness of your responsibility, and the privilege of representing your school and family
- Respect the integrity and judgement of game officials
- Understand team rules and consequences as established by the coach/supervisor

## PARENT RESPONSIBILITIES

- Read, support and follow rules and consequences as established by the coach/supervisor
- Arrange to have prompt transportation for your child in regard to practices/games/meets/performances.
- Care and return of all uniforms and equipment, if applicable

## SPECTATOR CONDUCT

- It is a privilege, not a right, to observe games/meets/performances
- Spectators are present to support the program, its participants and to enjoy the skill and the competition/performance
- Spectators are expected to understand that the school's activities are a learning experience for students and that mistakes are sometimes made
- Show respect for the opposing players, coaches, and spectators
- Respect the integrity and judgment of the game officials
- Do not use profanity, obscene language or improper actions

**Communication you should expect from your child's coach/supervisor**

- Locations and times of all practices and games/performances
- Discipline that results in the denial of your child's participation
- Concerns regarding your child's role as a team/activity member

**Communication coaches/supervisors expect from parents**

- Notification of any schedule conflicts well in advance
- Concerns expressed directly to the coach/supervisor

**Appropriate concerns to discuss with coaches/supervisors**

- The treatment of your child, mentally and physically
- Ways to help your child improve

**Issues not appropriate to discuss with coaches**

Playing time

Team strategy

Play calling

Other student athletes

**Note: It may be difficult to accept your child's not playing as much as hoped. A coach makes decisions based on what is believed to be best for all involved.**

# Pleasantdale Middle School Athletic Program

*Pleasantdale Middle School offers a variety of athletic opportunities throughout the year. Participation in these activities is a privilege and not a right. It is the students' responsibility to maintain eligibility by meeting all academic and behavioral standards.*

*Academic Eligibility rules for athletics:*

- ☛ *A student with three D averages or any F average is ineligible to **participate** in any practice or game.*
- ☛ *Ineligible students **must** still attend practices/games and will be provided academic study time.*
- ☛ *A student remains ineligible until their averages are raised to meet the criteria.*
- ☛ *Upon meeting academic requirements the student will need to have teacher(s) sign off on a re-entry slip to be given to their coach for full participation rights.*
- ☛ *Grade level teams will review student grades weekly. Every Friday students' eligibility will be determined.*

*Other Eligibility:*

- ☛ *A current sports physical is required to be on file in the school nurse's office **prior** to try-outs.*
- ☛ *Compliance with **Code of Conduct***

## **CODE OF CONDUCT**

*As a member of Pleasantdale Middle school athletic team, athletes are considered to be in positions of leadership, representing themselves, their families, the team, school, district and community. Therefore, along with the privilege of participation comes the expectation of a higher standard of behavior and conduct.*

*Students are expected to:*

- ☛ *Follow districts discipline plan at all times*
- ☛ *Display good sportsmanship and citizenship*
- ☛ *Maintain good conduct and performance in classrooms*
- ☛ *Support individual and whole team efforts.*

## 2009- 2010 Activity Sponsors and Coaches

Band and Orchestra	Mr. F. Bell
Chorus	Mr. T. Tatina
Intramural Coordinator	Miss K. Lewellyan
Math Olympiad	Mrs. J. Vonnahme
Musical Directors	Mr. L. Neumann, Mr. T. Tatina
Newspaper Advisor	Mrs. J. Johnson
Peer Leadership Coordinators	Mrs. D. Cummens, Mrs. D. Washburn
Peer Mediation Coordinator	Miss C. Castaldo
Rainbows Coordinator	Miss C. Castaldo
Scholastic Bowl	Mrs. N. Lasko
Student Council Advisors	Mrs. S. Reed
Yearbook Advisors	Miss A. Mars
Basketball 8 <sup>th</sup> Grade Girls	Mr. J. Reid
Basketball 7 <sup>th</sup> Grade Boys	Mr. E. Busch
Basketball 7 <sup>th</sup> Grade Girls	Mr. M. Dreher
Basketball 8 <sup>th</sup> Grade Boys	Mr. M. Dreher
Cheerleading 8 <sup>th</sup> Grade	Miss A. Mars
Cheerleading 7 <sup>th</sup> Grade	Mrs. K. Thompson
Cross Country	Miss S. Macek, Mrs. K. Griffin
Soccer	Mrs. J. Johnson, Mrs. A. Montemayer
Softball 7 <sup>th</sup> Grade Girls	Mr. M. Dreher

Softball 8 <sup>th</sup> Grade Girls	Mr. E. Busch
Softball 7 <sup>th</sup> Grade Boys	Mr. A. Emzo
Softball 8 <sup>th</sup> Grade Boys	Mr. E. Busch
Volleyball 7 <sup>th</sup> Grade Girls	Mrs. K. Vervack
Volleyball 8 <sup>th</sup> Grade Girls	Mrs. A. DiFebo
Volleyball 7 <sup>th</sup> Grade Boys	Mr. A. Emzo
Volleyball 8 <sup>th</sup> Grade Boys	Mr. J. Reid

Coaches and sponsors can be contacted via e-mail. District e-mail addresses are the first letter of their first name, their full last name [@d107.org](mailto:____@d107.org)