

## Special Programs

- **Math Olympiad** is a program for elementary students up to and including grade 5.
- **Geography Bee** is an annual competition that involves students from grades 5-8. Classroom competitions lead to grade level champions.
- **Math Competitions** include interscholastic mathematics competitions involving the top middle school math students.
- **Camp Invention** is a national program from the Inventors Hall of Fame and the US Patent Office held for 1 week each summer for all interested students entering grades 2-6.
- **Extracurricular clubs and activities** are available throughout the school year.

- **West 40 Speech and Drama Competition** is a regional competition for students in grades 6-8 who exhibit special talents to compete in a variety of speech and drama events.
- **Midwest Talent Search** provides educational opportunities for highly able students through Northwestern University and the West Suburban Consortium for Academic Excellence.
- **Scholastic Bowl** is an academic quiz bowl for students in grades 6-8 who compete interscholastically. The program is open to all interested students.

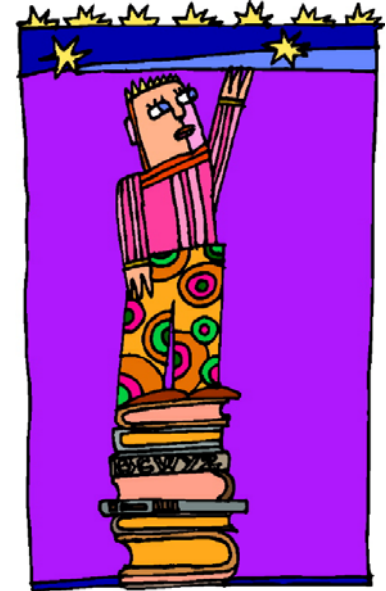
## Staffing

The district currently employs two full-time teachers of the gifted, one for elementary school and one for middle school.

See the Connections pages on the school website for additional resources

[www.pleasantdale.k12.il.us](http://www.pleasantdale.k12.il.us)

## Pleasantdale School District 107 Gifted Program



**The mission of the District 107 Gifted Program is to assure the continuous academic, social and emotional growth of students Pre-K through 8 who possess distinct talents and gifts by providing curriculum differentiation in and out of the classroom.**

Pleasantdale School District 107  
7450 South Wolf Road  
Burr Ridge, IL 60527  
708-784-2013

## Identification

Formal assessments are used to identify students who will receive gifted services at grades 3-8. The identification process involves reviewing students' assessment data, incorporating teacher recommendation as well as parental input, and completing a matrix to determine placement.

## Delivery of Services

Teachers of the Gifted are responsible for the following services:

- collect, administer, and analyze formal and informal student evaluative data for screening and identification. This includes students new to the district.
- work collaboratively with classroom teachers and provide materials to support curriculum differentiation.
- provide special curriculum for high-ability learners for language arts in grades 3 & 4.
- provide pull-out services through above level language arts classes in grades 5-8.
- maintain proactive, ongoing parent and community communication about programs and resources.
- conduct special events and programs.
- enrichment services for preK through grade 2.



## Program Components

### Acceleration

Appropriate placement is assigned and monitored for students in grades 2-8 in the areas of language arts and math. Students are flexibly grouped according to academic needs.

Program options include:

- above level math in grades 2-8
- identified gifted students are clustered in grades 3-4 homerooms
- above level language arts classes in grades 5-8

### Differentiation

Teachers of the gifted collaborate with classroom teachers to:

- develop classroom management strategies
- compact curriculum
- provide extension activities
- provide enrichment modules

### Pull-out Programs

Students with distinct talents and gifts in grades 3-8 are provided special activities on a regular ongoing basis in each building.

## Program Objectives

All students with distinct academic talents and gifts will:

- demonstrate significant academic and cognitive growth each year.
- apply learning tools and strategies to solve problems of increasing depth and complexity beyond the baseline curriculum.
- develop and demonstrate a healthy self-concept, risk taking and a passion for learning to maximize distinct talents and gifts.

## Parameters

- We will always align our operational decisions based on our mission statement and objectives.
- We will always provide ongoing assessment of the program for the purpose of making improvements.
- We will always consider for inclusion in the program, all students who demonstrate unique talents and gifts.
- We will not initiate any program without communicating with stakeholders, securing board of Education approval, and obtaining adequate resources in advance.